

newhey



newhey
BEAUTIFUL CARPET

TECHNICAL INFORMATION

Construction	Colortec+
Description	Cute Pile Patterned Tufted Carpet
Pile Content	80% Pure New Wool / 20% Nylon
Total Pile Weight	1600g/m ²
Total Carpet Weight	2320g/m ²
Total Carpet Thickness	11mm
Primary Backing	Woven Polypropylene
Secondary Backing	Synthetic / EVA Hotmelt Technology
Width	4.00m
Suitability	Heavy Contract
Euro Class Radiant Panel Test	Pass Class Cfl S1 (EN 13501-1)
Specification Tolerances	Subject to BS 4223: 1989
Manufactured in the UK.	

Newhey Carpets Ltd reserves the right to change technical details without prior notice. For information on bespoke colours, specifications, width or secondary backing materials please refer to our Head Office.

Colour

Whilst every effort is made in matching colours and shades, differences may occur between dyeings, pattern book samples and roll stock. Where it is necessary that all carpet is from the same colour batch this must be made clear at the time of order.

Installation

All carpet should be installed in accordance with the recommendations laid out in our Product Installation guide. Copies can be requested by contacting our Customer Services team, or alternatively can be viewed and downloaded from the stock collection pages of our web site. For optimum performance in public areas and corridors exceeding 6.50m in length, and/or two widths or more, we strongly recommend carpet is installed on a suitable contract quality double stick installation system. Please also refer to BS 5325:2001, the code of practice for the Installation of Textile Floorcoverings, for further guidance.

Shading

Shading or Pile Reversal is a phenomenon that can occur in any cut pile carpet. Its occurrence cannot be attributed to any fault in manufacture or raw materials and therefore the company cannot accept any complaints arising from these effects.

Cleaning & Maintenance

Regular vacuuming and cleaning are essential as part of a general day to day maintenance programme. Appropriate and immediate spot cleaning of spillages is advised. For wet cleaning it is recommended a professional cleaning company are employed. For a comprehensive cleaning & maintenance guide please contact our Customer Services team.

PUZZLE



CONNECT



MAZE



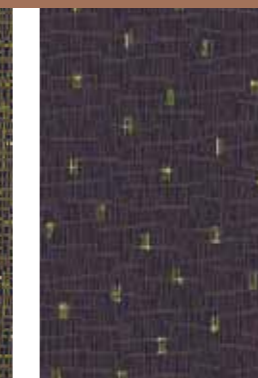
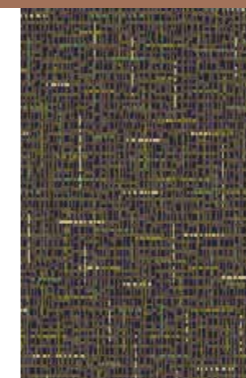
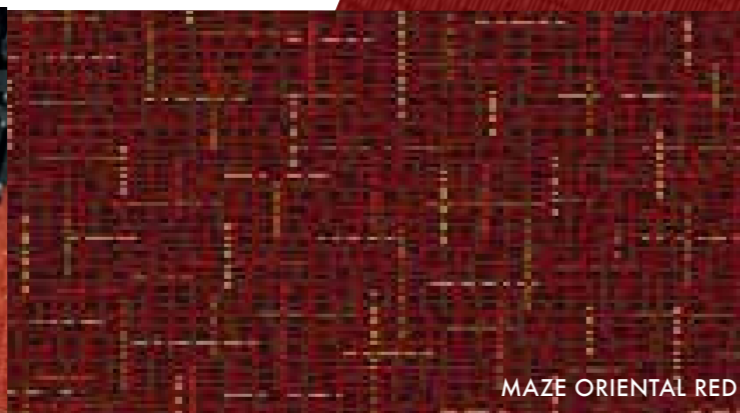
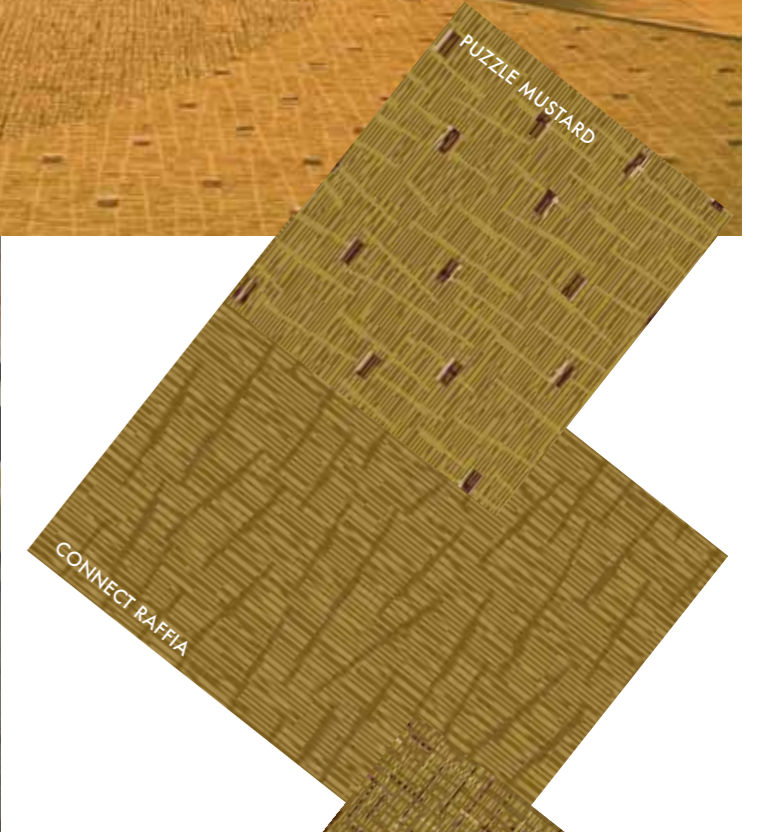
newhey

NEWHEY CARPETS LTD NEWHEY ROCHDALE LANCASHIRE OL16 3SL • T +44(0) 1706 846 375 • F +44(0) 1706 842 979
E sales@newheycarpets.co.uk • W www.newheycarpets.co.uk • REGISTERED IN ENGLAND 990472

BEAUTIFUL DESIGNS & COLOURS AVAILABLE TO MIX & MATCH TOGETHER



Maze, Puzzle and Connect have been created to offer a versatile collection of complementing patterns and colours. Each collection is manufactured to a heavy contract Colortec+ specification making it suitable for use in a host of public spaces. Available from stock, using a standard palette of 47 colours, each collection provides something slightly different allowing designs to not only be used individually but also together. Working with time constraints can be difficult when selecting from stock, Maze, Puzzle and Connect provide the opportunity to 'Mix & Match' giving our customers more scope to create stylish and well thought out interiors.



For samples and more information on how to specify these collections please contact customer services on 01706 846 375.

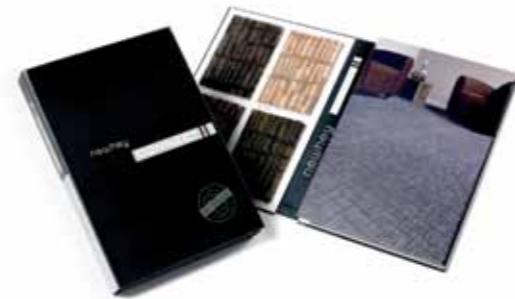
MAZE FROSTED PLUM

PUZZLE DAMSON

CONNECT STOCK COLLECTION



Construction: Colortec+
 10 colours
 80% wool / 20% nylon
 Total Pile Weight: 1600gm2 (47oz/yd2)
 Heavy contract
 4m wide



CONNECT

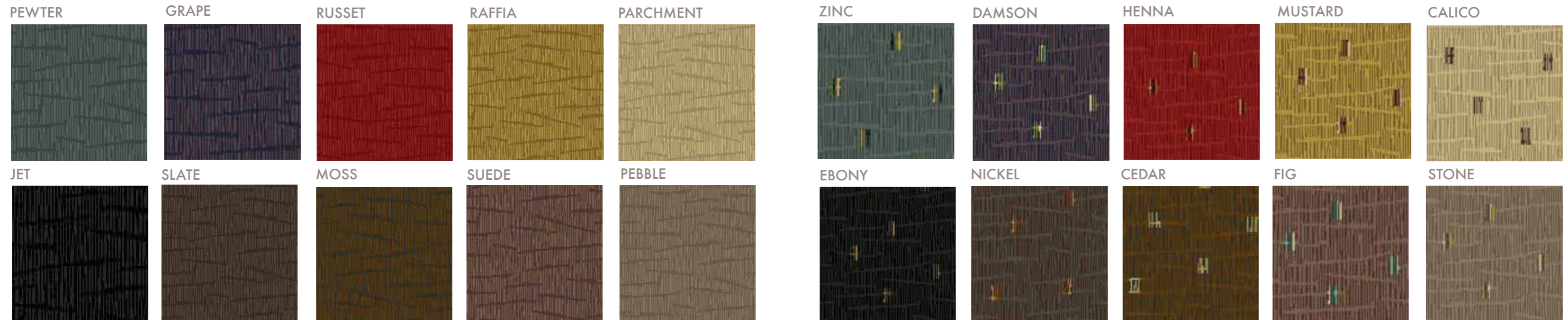
PUZZLE STOCK COLLECTION



Construction: Colortec+
 10 colours
 80% wool / 20% nylon
 Total Pile Weight: 1600gm2 (47oz/yd2)
 Heavy contract
 4m wide



Puzzle



MAZE
 MIX & MATCH
 PUZZLE CONNECT

To request Stock Collection Folders and samples, go to www.newheycarpets.co.uk or call the customer services team on 01706 846 375



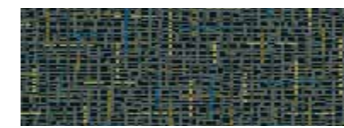
MAZE STOCK COLLECTION



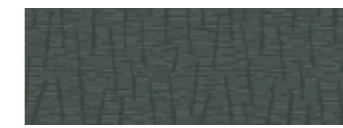
Construction: Colortec+
 10 colours
 80% wool / 20% nylon
 Total Pile Weight: 1600gm2 (47oz/yd2)
 Heavy contract
 4m wide



COLOUR REFERENCE GUIDE



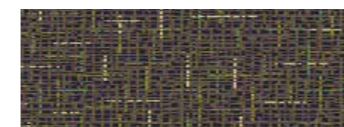
MAZE STEEL BLUE



CONNECT PEWTER



PUZZLE ZINC



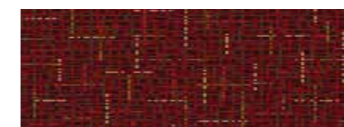
MAZE FROSTED PLUM



CONNECT GRAPE



PUZZLE DAMSON



MAZE ORIENTAL RED



CONNECT RUSSET



PUZZLE HENNA



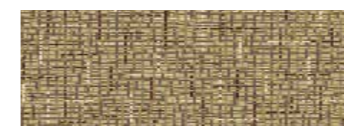
MAZE EGYPTIAN GOLD



CONNECT RAFFIA



PUZZLE MUSTARD



MAZE ANTIQUE CREAM



CONNECT PARCHMENT



PUZZLE CALICO



MAZE URBAN BLACK



CONNECT JET



PUZZLE EBONY



MAZE SMOKEY GREY



CONNECT SLATE



PUZZLE NICKEL



MAZE CHARCOAL GREEN



CONNECT MOSS



PUZZLE CEDAR



MAZE NUTMEG BROWN



CONNECT SUEDE



PUZZLE FIG



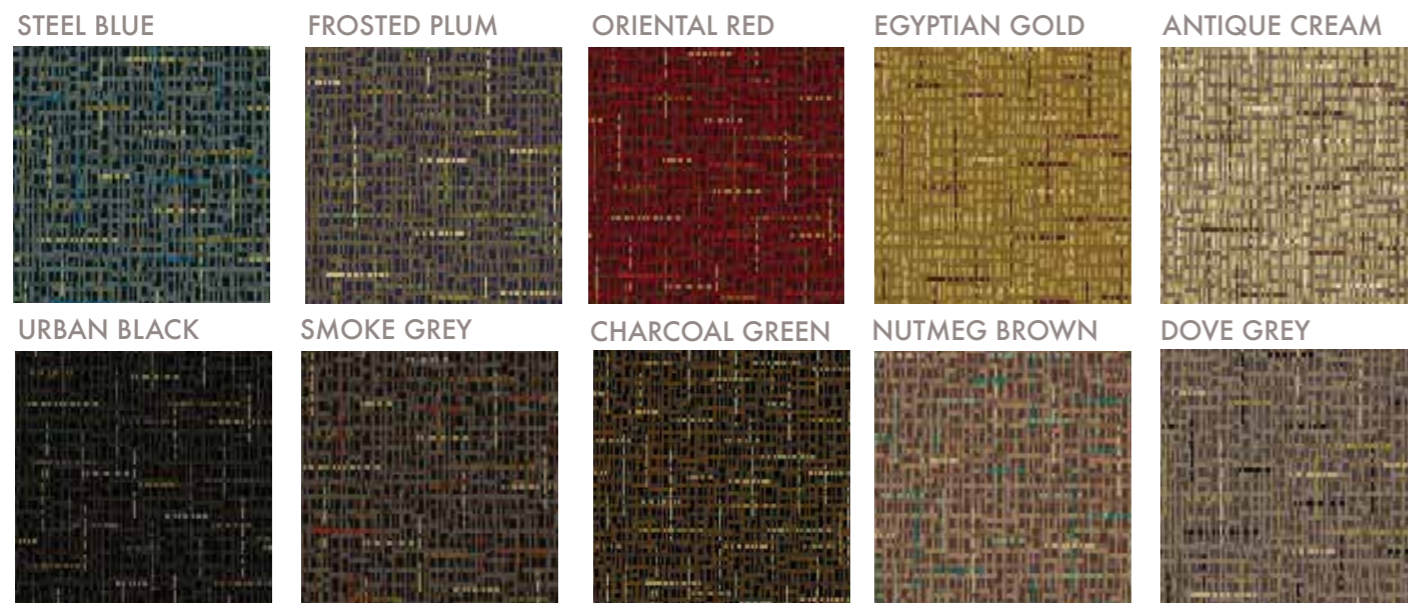
MAZE DOVE GREY



CONNECT PEBBLE



PUZZLE STONE



To request Stock Collection Folders and samples, go to www.newheycarpets.co.uk or call the customer services team on 01706 846 375